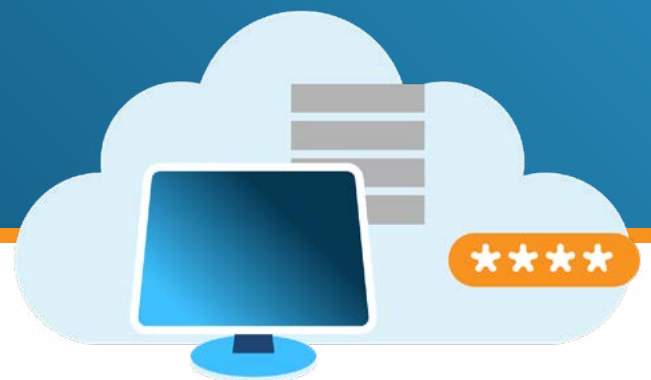




Customer Deployment Requirements

Xiid Collector – Brokerage Service



Estimated Installation Time

6 – 8 hours: Full
Configuration

Requirements

Operating System and Architecture Requirements

The Xiid Request collectors are more in-depth than other Xiid software to install. As such, the support for operating systems is more limited. SealedTunnel and Request Collectors have the same OS requirements.

What you Need:

Windows

- Server 2019
- Server 2022

Linux

- Red Hat Enterprise Linux
- Ubuntu Server

Supported Architectures

- X86-64
- AMD64

Hardware Resources

The Xiid Collector is the largest software package that Xiid offers and is the backbone of the entire Xiid Platform. Xiid Collectors are typically (and preferably) offered through Xiid's SaaS model, with highly available Collectors across multiple cloud providers and regions managed by Xiid's in-house security experts.

Some customers will require their own hosting of the Collector due to preference or organizational constraint. In those cases, the Xiid Collector can be deployed on-premises and managed by the organization.

What You Need:

The Xiid Collectors are split into two types: Request Collector and ST Collector. A Request Collector is required for Xiid.IM. An ST Collector is required for Xiid.ST. If you are using both products, we **highly recommend** installing the collectors on **separate** machines.

Request Collector Requirements:

- **Minimum System Requirements:**
 - 4 CPU Cores
 - 8 GB RAM
 - Disk Space
 - 50 GB Installation and files
- **Recommended System Requirements:**
 - 8 CPU Cores
 - 16 GB RAM
 - Disk Space
 - 60 GB Installation and files

SealedTunnel Collector Requirements:

Note: Add additional cores and RAM for higher bandwidth loads

- **Minimum System Requirements:**
 - 6 CPU Cores
 - 16 GB RAM
 - Disk Space
 - 50 GB Installation and files
- **Recommended System Requirements:**
 - 12 CPU Cores
 - 24 GB RAM
 - Disk Space
 - 60 GB Installation and files

Network Resources

The Xiid Collectors **must** be reachable via port 443 on the server (or both 443 and 10451 if both collectors are installed on one machine). Each Xiid Collector requires its own unique x.509 Certificate with a verified Certificate Authority (we do not support self-signed certificates). Alternatively, you can use one wildcard certificate with a verified Certificate Authority. Additionally, each Xiid Collector needs outbound access to the licensing server during the initial setup on outbound port 443. The Certificate Authority used in the Collector installation must be a trusted authority on all machines within the enterprise. The Xiid Collector requires browser access (supported browsers include Chrome, Edge, Firefox, and Brave) for initial configuration via port 443.

What you Need:

- **Inbound access to the Xiid Collector on port 443 (standard port)**
 - Also for port 10451 if installing both Collectors on one machine (not recommended)
- **One x.509 Certificate per Xiid Collector from a verified Certificate Authority**
 - Can also use one Wildcard Certificate from a Certificate Authority
- **Outbound access to Xiid Licensing Server (<https://activate.xiid.com>) during initial setup via port 443**
- **Browser access via port 443 to Collector after setup to finish Collector configuration**

Email Resources

The Xiid Collectors require access to an SMTP Mail Server to send to emails on behalf of Xiid for various purposes, which include sending initial onboarding credentials and multifactor authentication reset links. The SMTP Client must use TLS Encrypted emails typically on port 587.

- **SMTP Client for Email Server Access for Xiid Collectors**
- **Valid username and password for an SMTP client service account**
- **SMTP Client with TLS Encrypted emails (typically on standard port 587)**

Xiid Will Provide...

Software Resources

Xiid will provide the Xiid Collector installers and software for managing self-hosted Xiid Collectors. This can include either the Xiid Request Collector for Xiid.IM, the Xiid SealedTunnel Collector for Xiid.ST, or both. Each Collector will require a valid license provided by Xiid to activate the Collector.

What Xiid Provides:

- **Xiid Request Collector installer for full installation, configuration, and setup (for Xiid.IM customers)**
- **Xiid SealedTunnel Collector installer for full installation, configuration, and setup (for Xiid.ST customers)**
- **Support for the Xiid Collectors for installation and setup as well as customer support**